

MY 2018

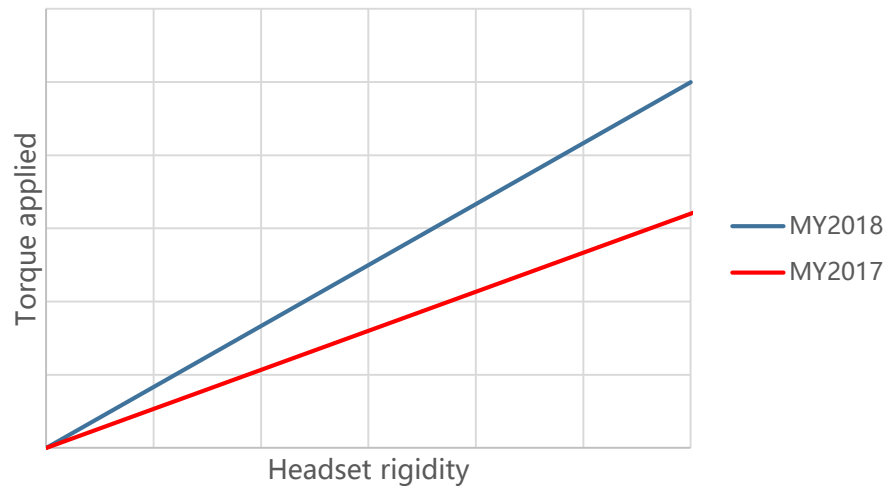
NEWS

Goals in summary

1. Weight reduction (4,7kg for 2T and 5,3kg for 4T)
2. Improvement ride feeling and handling
3. Look Refresh
4. Keep the same price

CHASSIS – news

- New frame
 - More light for a better handling
 - Increased stiffness, improve ride precision
 - Improved reliability



CHASSIS – news

- Smaller filter box and thinner backside of the bike
 - Look more streamlined
 - More light
 - Backside of the bike more tapered



CHASSIS – news

- New front fork sleeve
- New shock setting



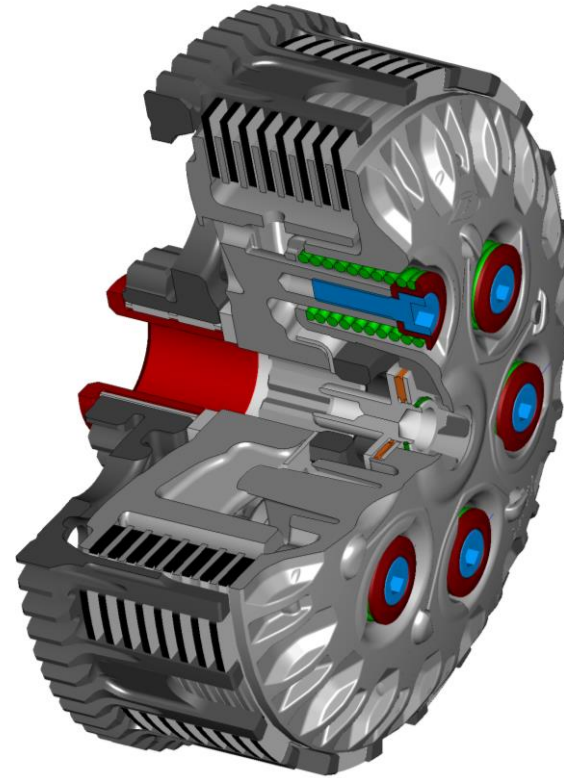
CHASSIS – news

- Lithium Battery
- New silencer (only 4T)
- New engine protection plate (only 2T)
- New silencer heat protection (2T and 4T)
- New Tagasako Excel rim
- New color and decal

ENGINE – common news 2T and 4T

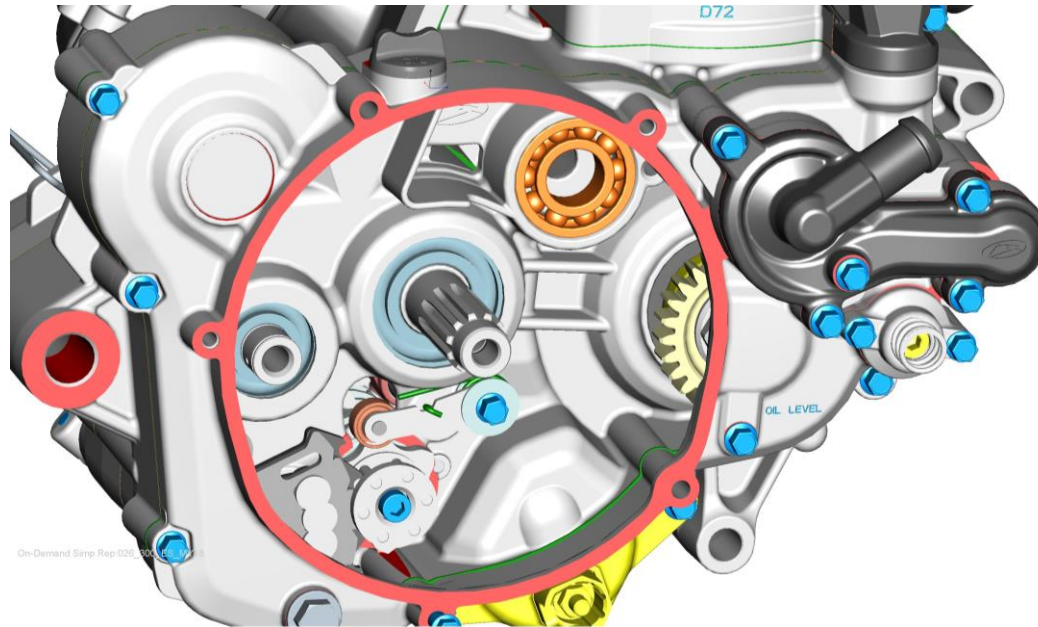
WEIGHT REDUCTION: -1,7 Kg.

- New clutch. More compact and light. Easy to control, precise and stable at temperature changes



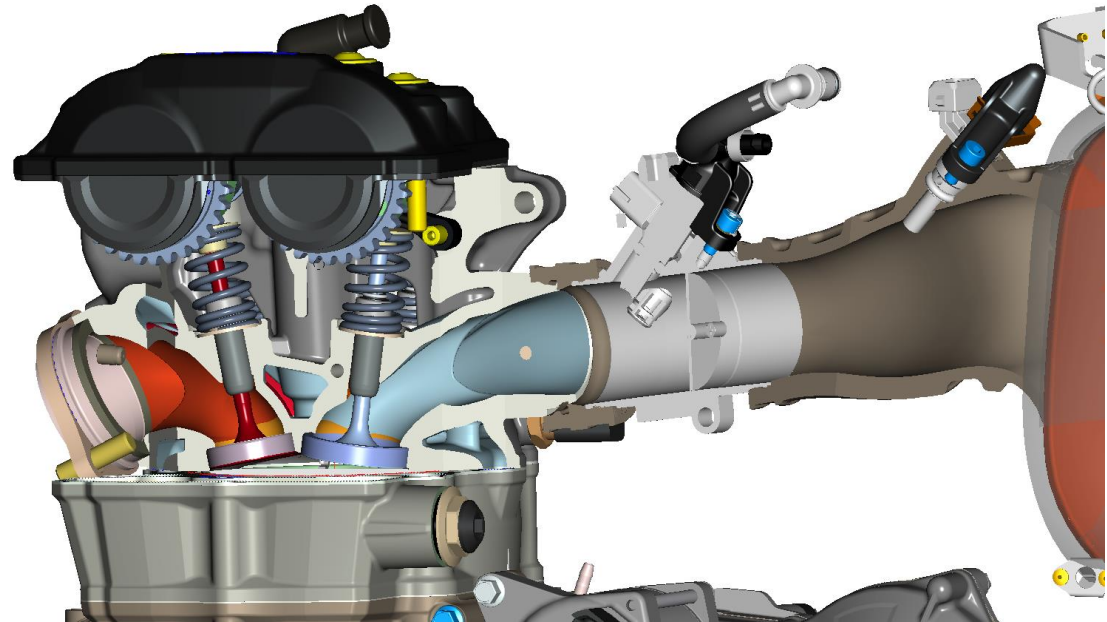
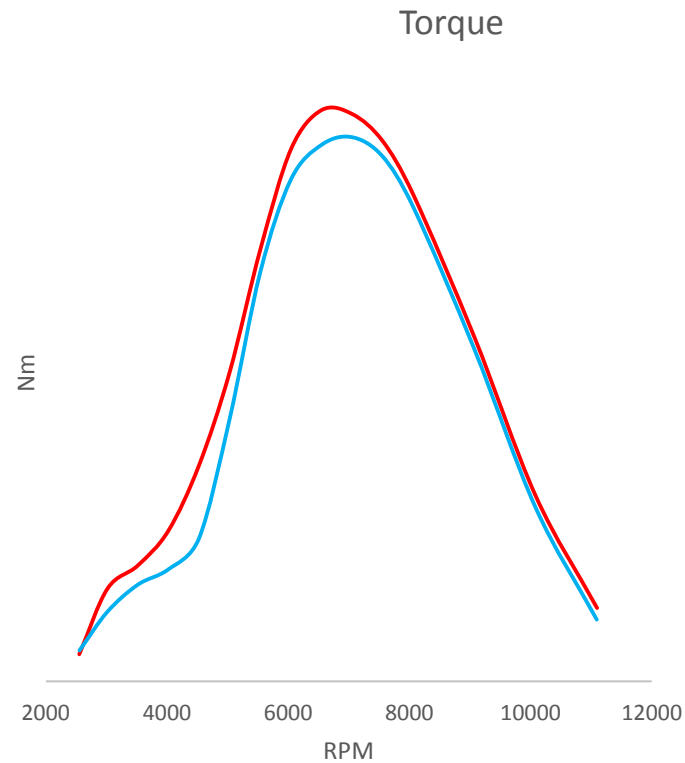
ENGINE – common news 2T and 4T

- Kickstarter removed
- New shifting lock system: more precise



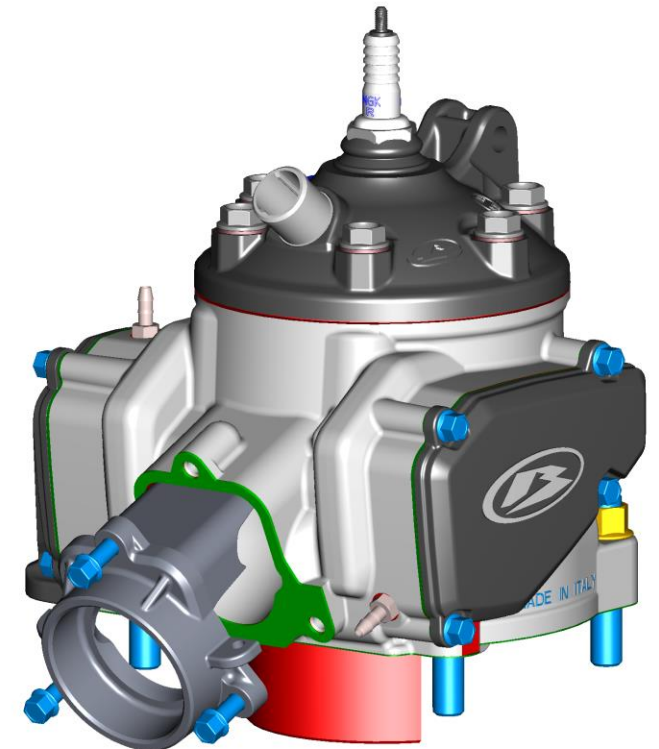
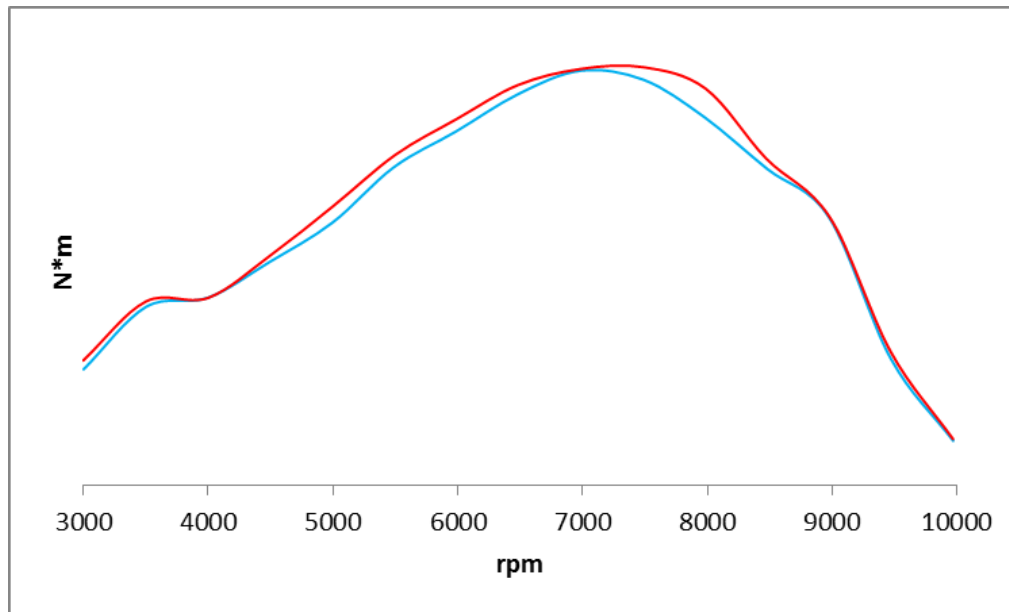
Engine – 4T news

- EFI with double injector: improved performance and lower fuel consumption for all displacement



ENGINE – 2T news

- New cylinder: better torque and power
- New combustion chambers: small compression ratio increment



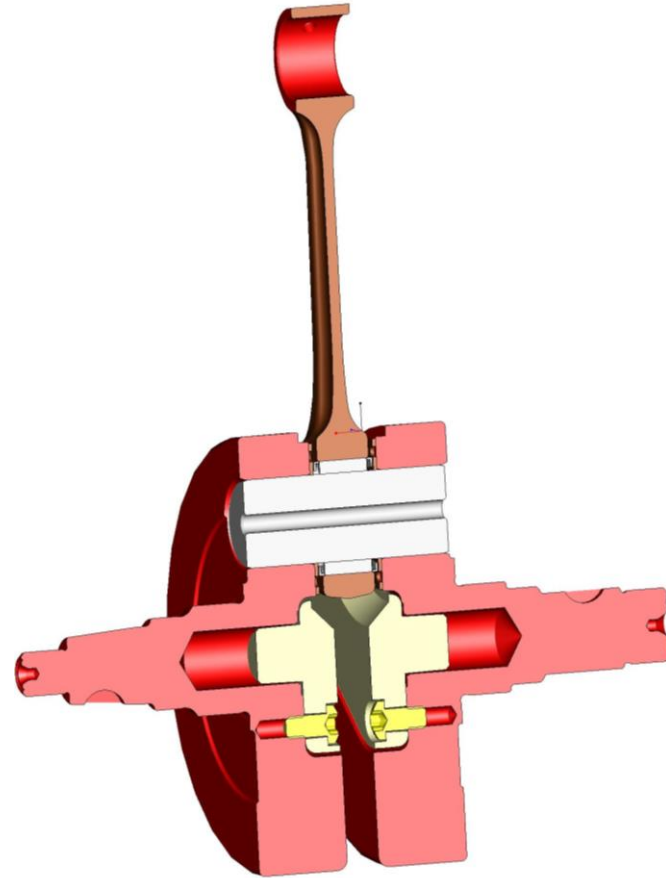
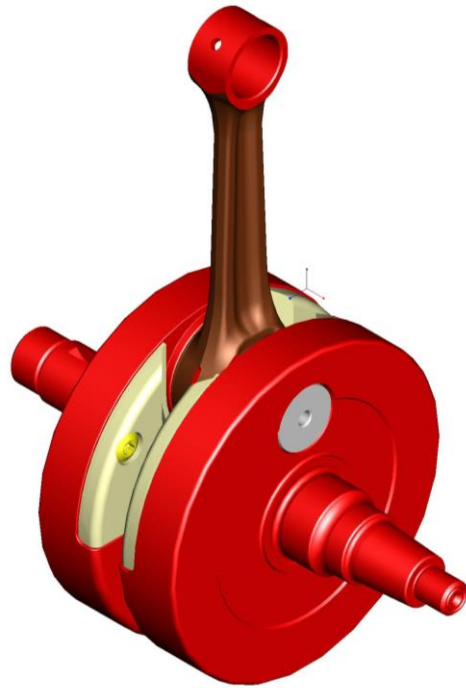
ENGINE – 2T news

- New domed piston with specific cylinder head profile (only 300cc): better performance, more stable turning at low rpm



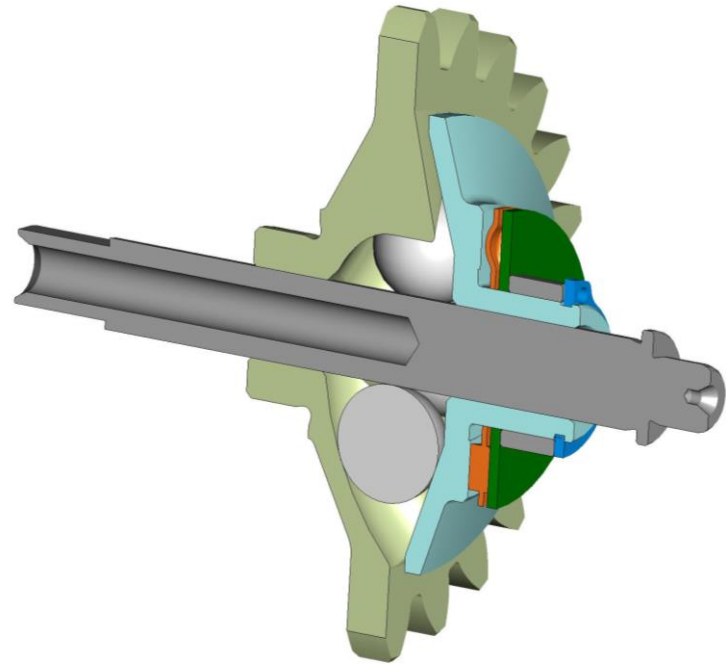
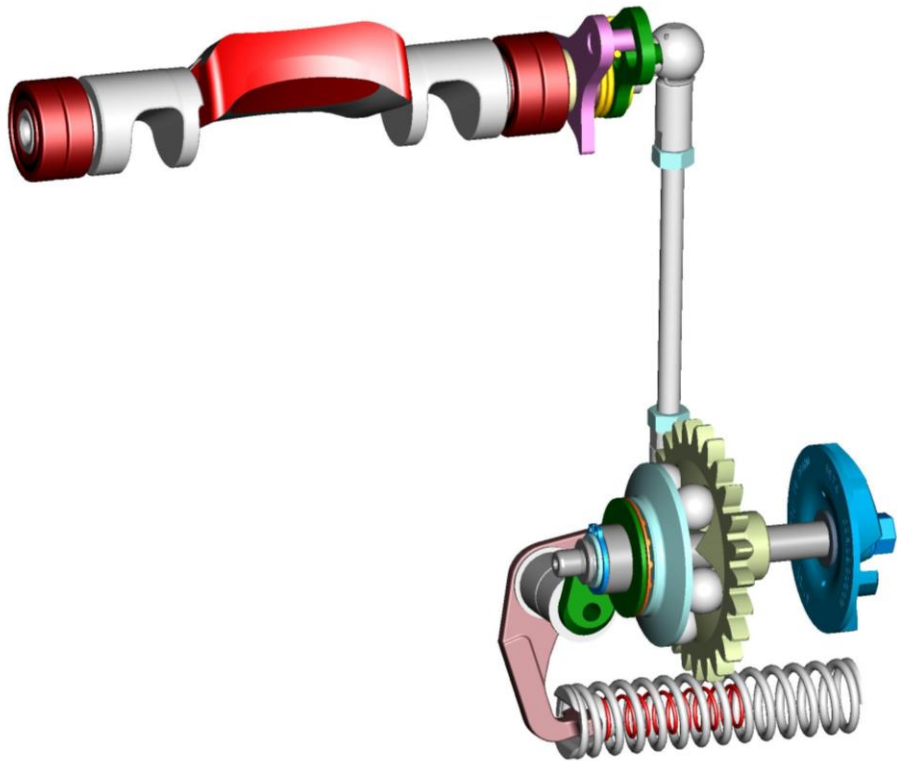
ENGINE – 2T news

- New crankshaft with different inertia value
- New conrod: new top end design

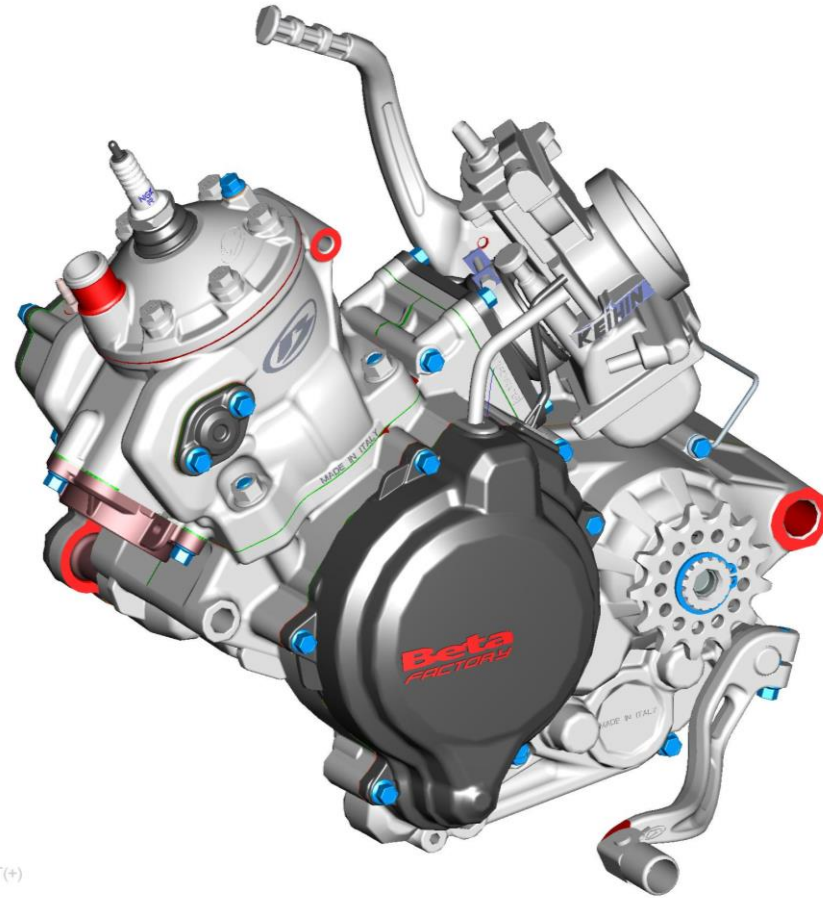


ENGINE – 2T news

- New exhaust flap and centrifugal unit with heavier ball. Better power delivery



ENGINE – 125 news



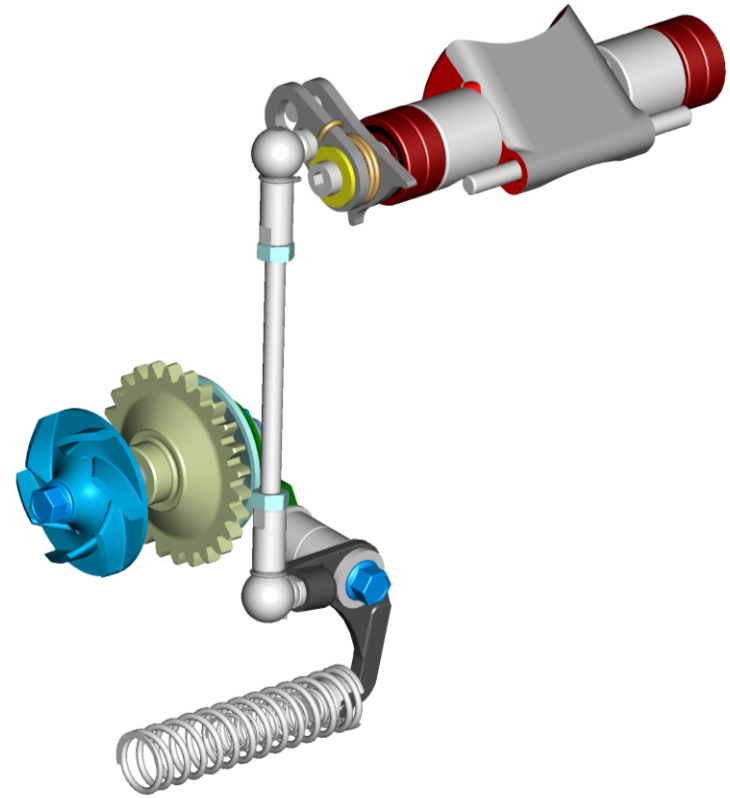
ENGINE – 125 news

- Double ring forged piston (ø54 mm)



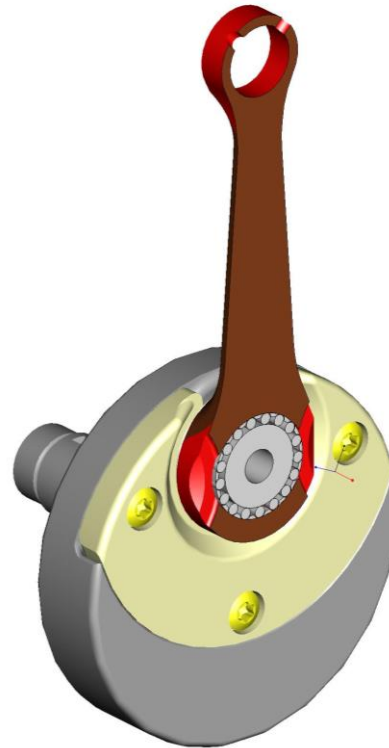
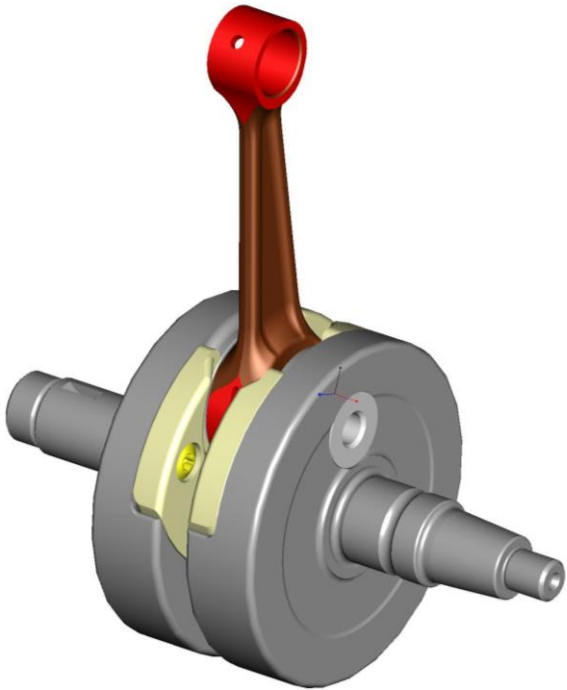
ENGINE – 125 news

- Beta progressive valve: same system as RR 250 and 300cc. Better power delivery



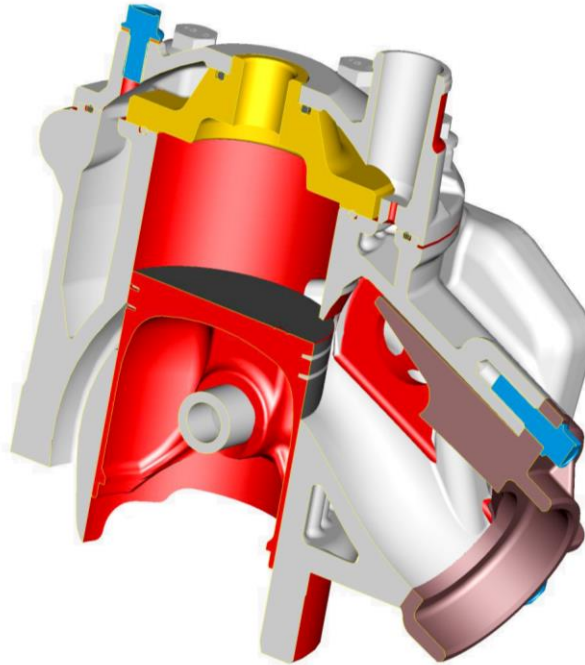
ENGINE – 125 news

- Crank shaft with plastic insert. Reduce weight and higher compression of the crankcase



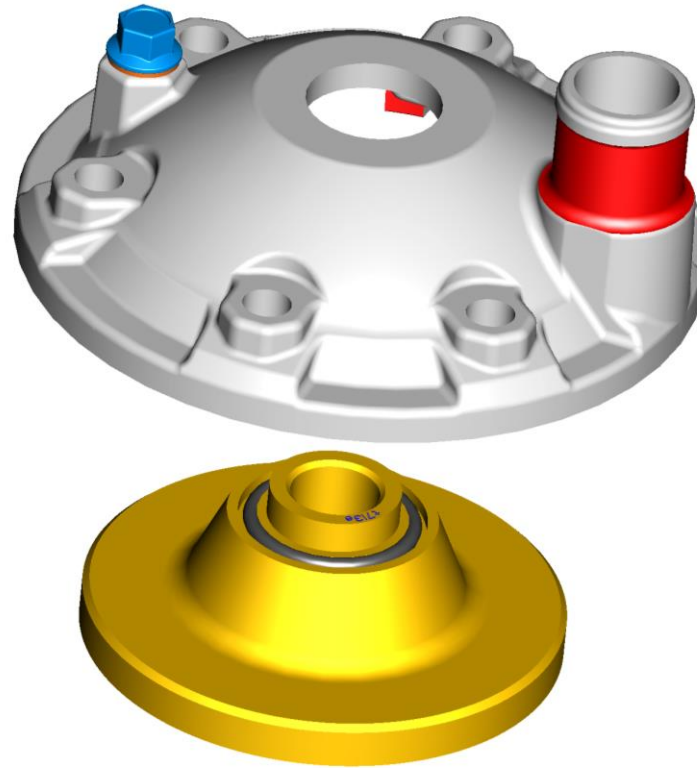
ENGINE – 125 news

- Cylinder: with exhaust flange system. Better control of the front gap between piston and exhaust flap and cylinder. Improve performance at low rpm



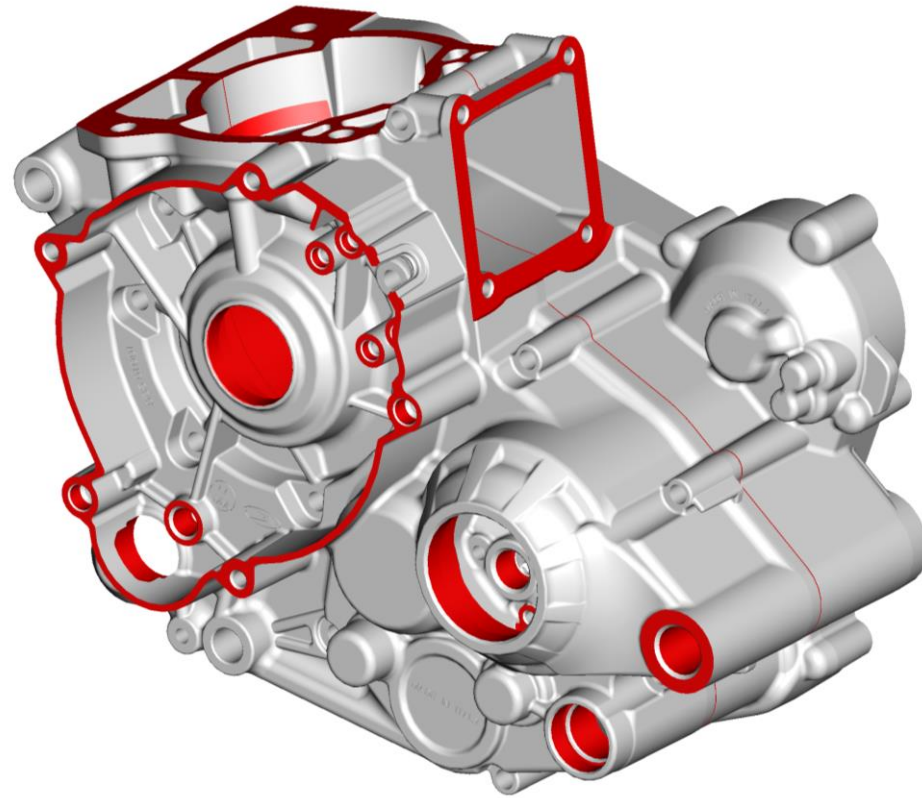
ENGINE – 125 news

- Aluminum cylinder head composed by an internal combustion chamber and an outer cover. Stiff and light



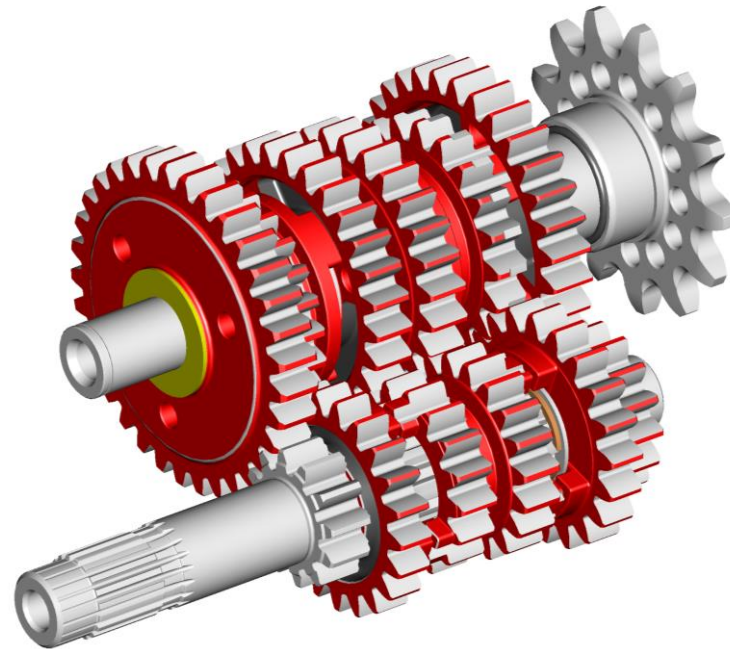
ENGINE – 125 news

- Diecast aluminum engine case



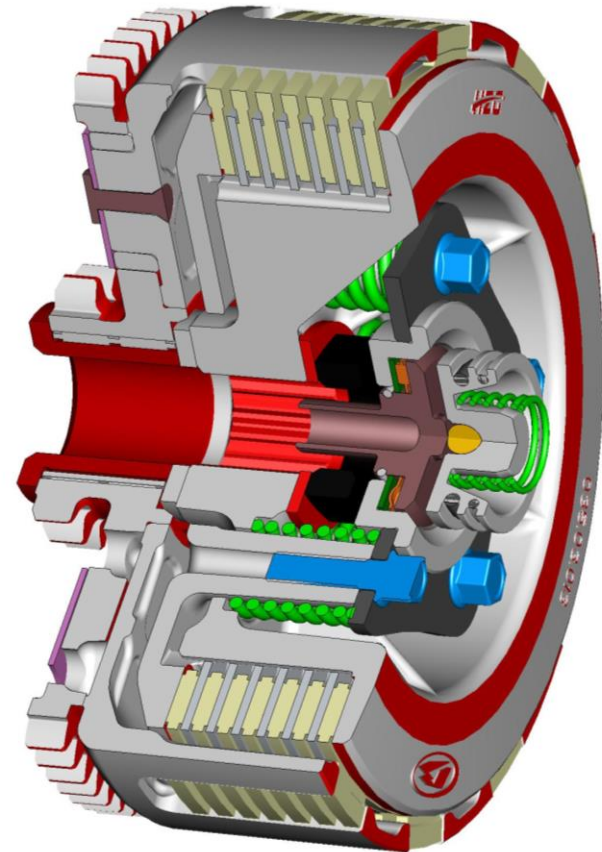
ENGINE – 125 news

- Dicast magnesium clutch and ignition covers
- V force 4 reed block
- 6 speed gearbox



ENGINE – 125 news

- Wet clutch: multi-disc with reverse opening



THANK YOU!

